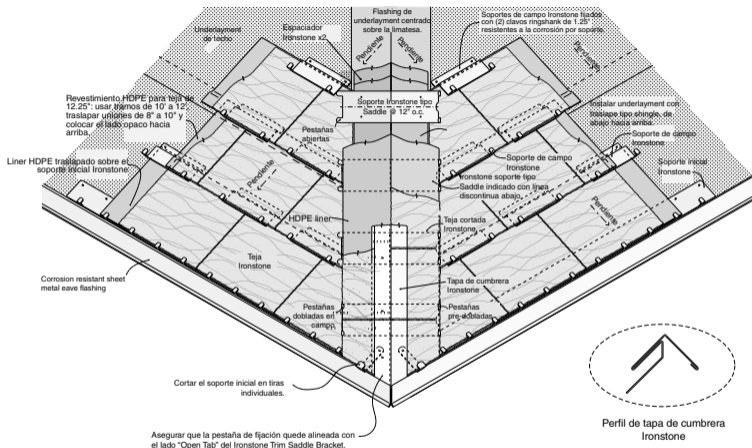
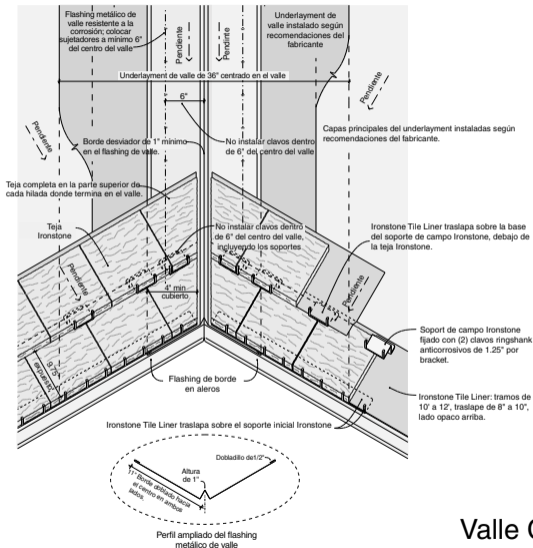


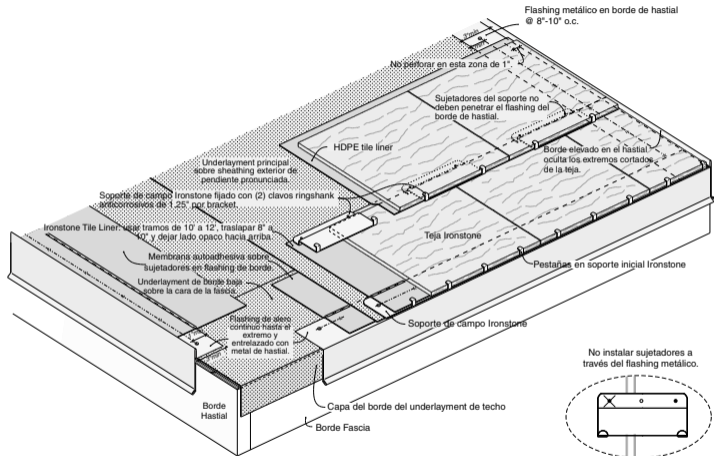
Cumbrera No Ventilada con Clips de Cumbrera



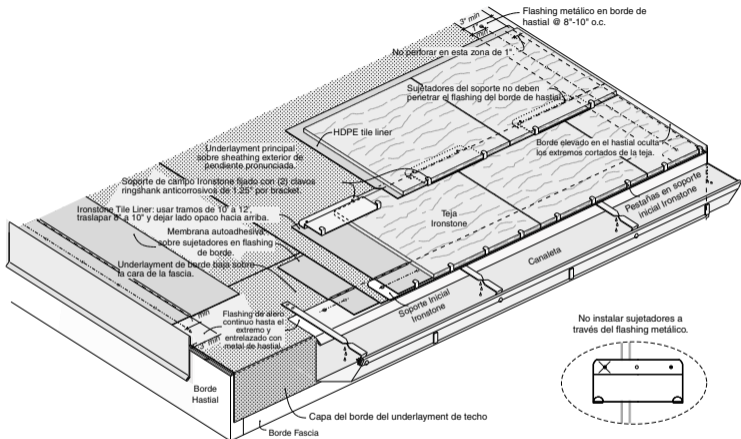
Limatesa con tapa de Cumbre



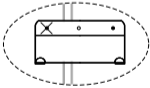
Valle Cerrado



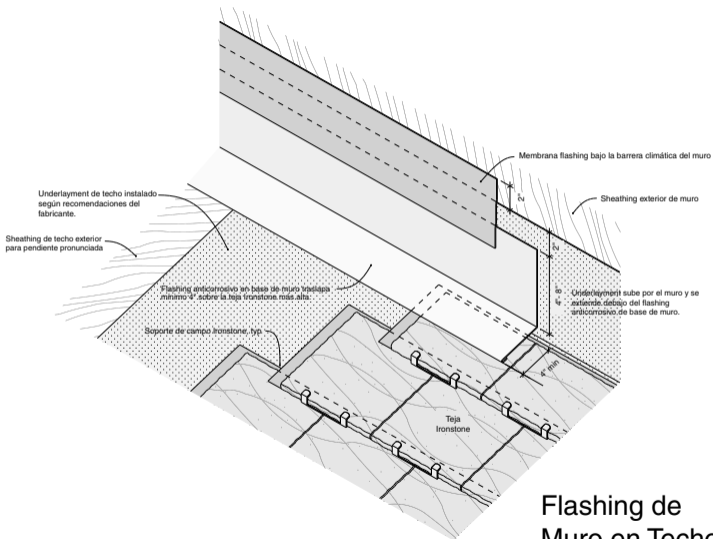
Alero en Borde de Hastial



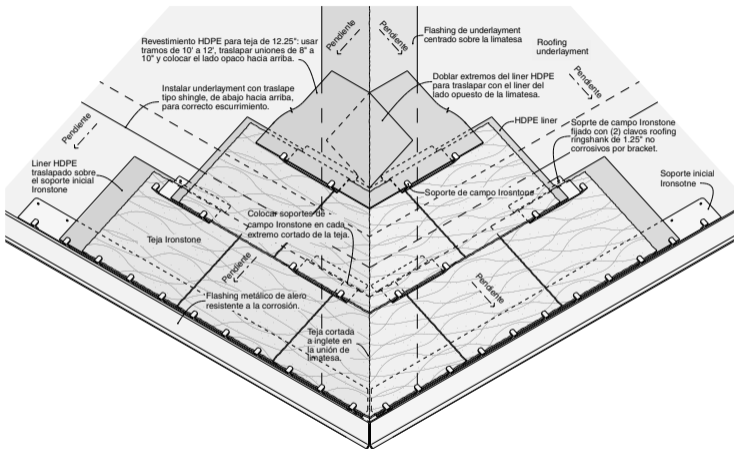
No instalar sujetadores a través del flashing metálico.



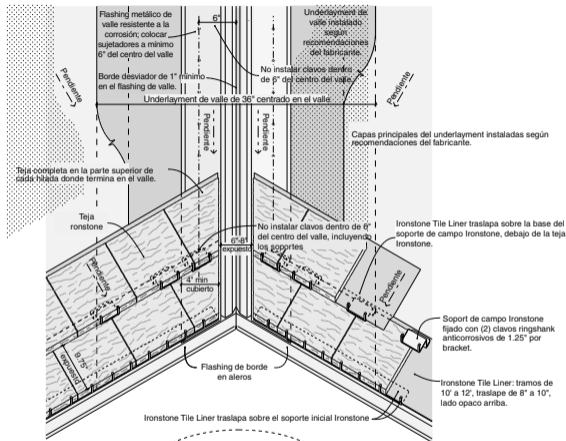
Alero en Hastial con Canaleta



Flashing de Muro en Techo

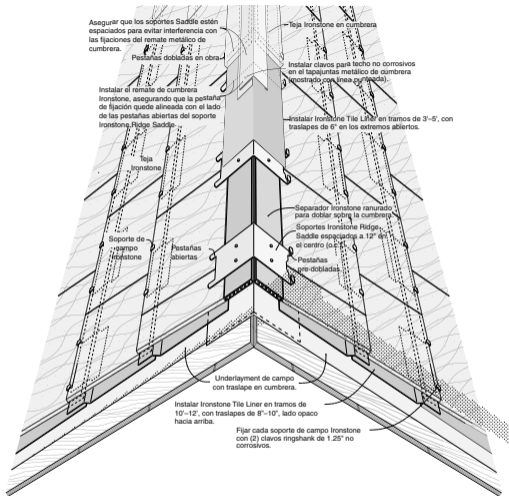


Techo con Limatesa a Inglete

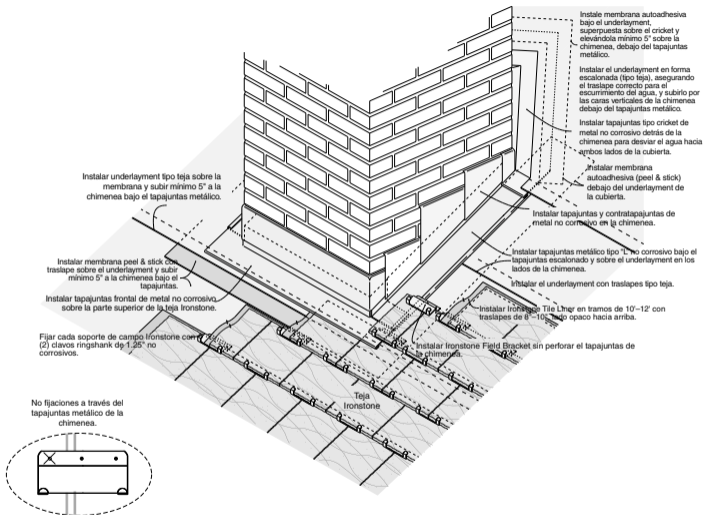


Perfil ampliado de flashing metálico Triple Crown para valle

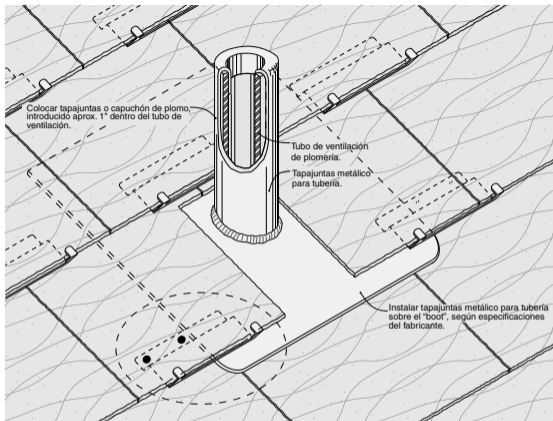
Valle Abierto



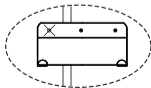
Cumbrera No Ventilada con Remate de Cumbrera



Techo en Chimenea



No fijaciones a través del tapajuntas metálico.



Techo en Ventilación de Plomería